

STATE OF FLORIDA  
COUNTY OF BROWARD  
I HEREBY CERTIFY that this is a true and correct copy of a map or plat as the same appears of record in Plat Book 9 at Page 59 of the public record of Broward County Florida. WITNESS my hand and official seal in the City of Fort Lauderdale, FL this 21 day of Feb. A.D. 1968  
L. A. HESTER, County Administrator  
By *[Signature]*

# Fairview

A SUBDIVISION IN  
SECTION 2, T49S R42E  
for  
**LAKE VIEW LAND CO.**  
OF POMPANO  
J.S. RHINE CIVIL ENGINEER  
SCALE 1"=100' OCT 1925  
POMPANO, BROWARD CO. FLORIDA.

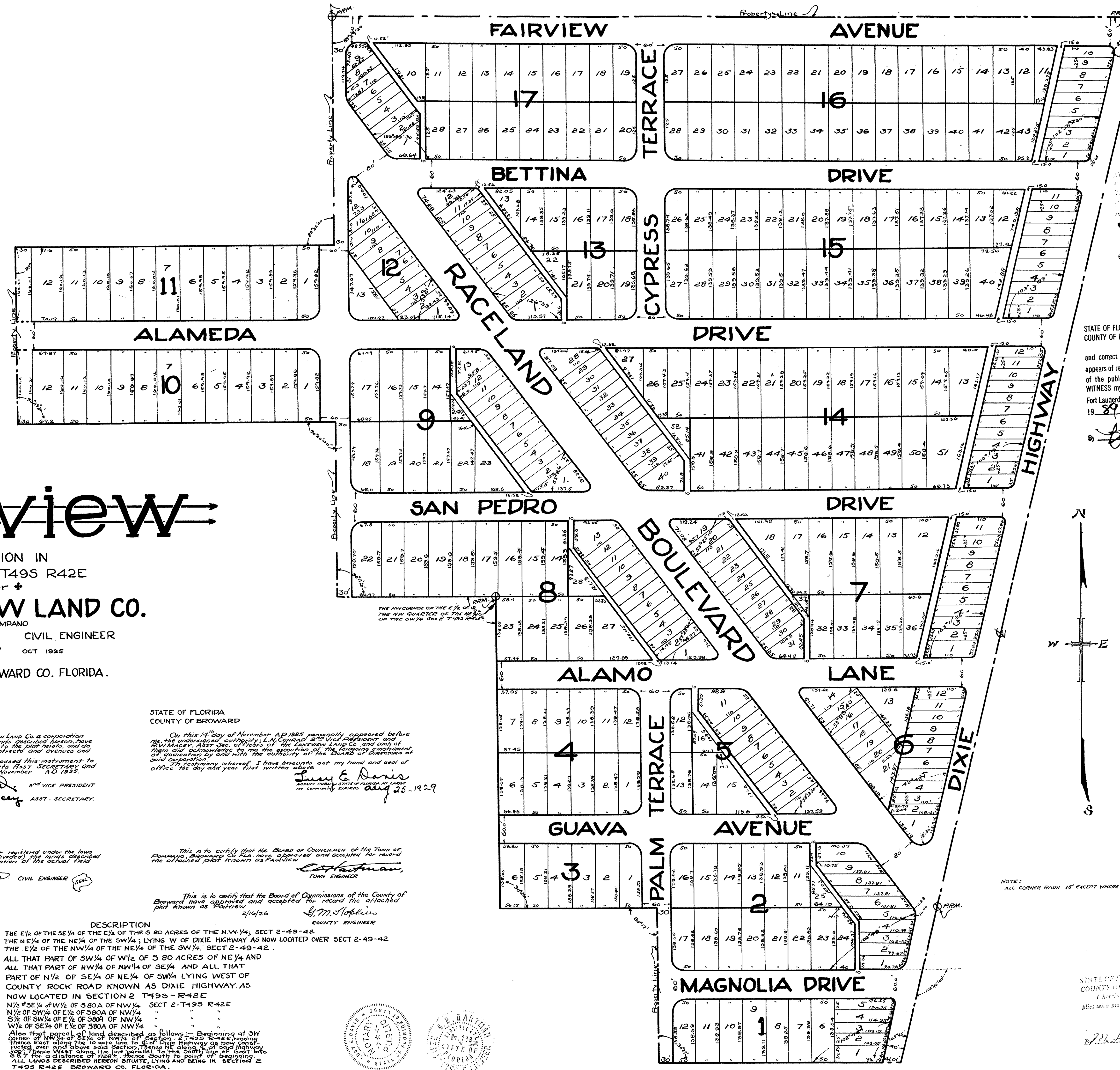
STATE OF FLORIDA  
COUNTY OF BROWARD  
Know all men by these presents that the LAKEVIEW LAND CO. a corporation under the laws of the State of Florida, owner of the lands described herein, have caused the same to be surveyed and plotted according to the plat hereon, and do hereby dedicate to the perpetual use of the public all streets and avenues and alleys as shown hereon.  
In testimony whereof, said corporation has caused this instrument to be signed by its Vice President, attested by its Secretary and the corporate seal to be affixed to this plat of November 10, 1925.  
WITNESSES  
*[Signature]* 2nd VICE PRESIDENT  
*[Signature]* ASST. SECRETARY

STATE OF FLORIDA  
COUNTY OF BROWARD  
This is to certify that J.S. RHINE, a licensed engineer, registered under the laws of the State of Florida, has surveyed and plotted (subdivided) the lands described herein and that the attached plat is a true representation of the actual field work done by me.  
J.S. Rhine CIVIL ENGINEER

STATE OF FLORIDA  
COUNTY OF BROWARD  
On this 14th day of November, A.D. 1925, personally appeared before me, the undersigned authority, L.N. Conrad, 2nd Vice President and Secretary, of the LAKEVIEW LAND CO., and each of them did acknowledge to me the execution of the foregoing instrument of dedication by and with the authority of the Board of Directors of said Corporation.  
In testimony whereof, I have hereunto set my hand and seal of office the day and year first written above.  
L.N. Conrad  
2nd VICE PRESIDENT  
Secretary

This is to certify that the Board of Commissioners of the County of Broward have approved and accepted for record the attached plat known as Fairview.  
J.M. Hopkins  
COUNTY ENGINEER

DESCRIPTION  
THE E 1/2 of the SE 1/4 of the E 1/2 of the S 80 ACRES OF THE N.W. 1/4, SECT 2-49-42.  
THE NE 1/4 of the NE 1/4 of the SW 1/4; LYING W OF DIXIE HIGHWAY AS NOW LOCATED OVER SECT 2-49-42.  
THE E 1/2 of the NW 1/4 of the NE 1/4 of the SW 1/4, SECT 2-49-42.  
ALL THAT PART OF SW 1/4 OF NW 1/4 OF SE 1/4 AND ALL THAT PART OF NW 1/4 OF NW 1/4 OF SE 1/4 AND ALL THAT PART OF N 1/2 OF SE 1/4 OF NW 1/4 LYING WEST OF COUNTY ROAD ROAD KNOWN AS DIXIE HIGHWAY AS NOW LOCATED IN SECTION 2 T49S - R42E  
N 1/2 SE 1/4 of W 1/2 of S 80A of NW 1/4 SECT 2-T49S R42E  
N 1/2 of SW 1/4 of E 1/2 of S 80A of NW 1/4  
S 1/2 of SW 1/4 of E 1/2 of S 80A of NW 1/4  
W 1/2 of SE 1/4 of E 1/2 of S 80A of NW 1/4  
Also that parcel of land described as follows: Beginning at SW corner of NW 1/4 of SE 1/4 of NW 1/4 of Section 2 T49S R42E, running thence East along the lot corner line to East Dixie Highway as now located over and above said Section, thence NE along the lot corner line to the South line of County Road 6 & 7 for a distance of 172.82', thence South to point of beginning. ALL LANDS DESCRIBED HEREON SITUATED LYING AND BEING IN SECTION 2 T49S R42E BROWARD CO. FLORIDA.



31519  
STATE OF FLORIDA  
COUNTY OF BROWARD  
I HEREBY CERTIFY that this is a true and correct copy of a map or plat as the same appears of record in Plat Book 9 at Page 59 of the public record of Broward County Florida. WITNESS my hand and official seal in the City of Fort Lauderdale, FL this 27 day of Feb. A.D. 1968  
L. A. HESTER, County Administrator  
By *[Signature]*